

WR02 シリアル(RS232) WiFi ルーター 変換器

株式会社日新テクニカ

<http://www.nissin-tech.com>

info@nissin-tech.com

2014/8/2



[copyright@2014](#)



修正履歴

修正日	修正内容
2014/8/2	初作成



1 Brief Introduction.....	5
2 Summarize	7
2.1 Technical Specifications	7
2.2 Product Outline	8
2.3 External Interface.....	8
2.3.1 RS232	9
2.3.2 LAN Interface and WAN interface.....	9
2.3.3 RST Button	10
2.3.4 5V Power Input	10
2.3.5 Antenna Terminal.....	10
2.3.6 LED Indicator light	11
3 Networking mode Brief Introduction	11
3.1 Star like Network Structure	11
3.3 Bus Network structure.....	12
3.4 Peer-to-peer Network structure.....	13
4 Quick start Guide	14
4.1 Preparatory work	14
4.2 Power-up Test.....	14
4.3 Function Test.....	15
5 Product parameter configuration and instruction.....	16
5.1 Serial Server Logo in	16
5.2 Serial server Parameter inquiry	16
5.3 WEB network configuration	17
5.3.1 Serial to Ethernet-dynamic ip	18
5.3.2 Serial to Ethernet-static ip	18
5.3.3 Serial to WIFI CLIENT-dynamic ip	18
5.3.4 Serial to WIFI CLIENT-static ip.....	19
5.3.5 Serial to WIFI AP	19
5.4 WEB serial configuration.....	19
5.5 Submitting Alteration	20
6 Function Description	21
6.1 Serial to Ethernet	21
6.2 Serial to WIFI CLIENT	21
6.3 Serial to WIFI AP	22
6.4 Default mode	22

6.4.1 TCP Server	23
6.4.2 TCP Client	23
6.4.3 UDP Server	24
6.4.4 UDP Client	24
7 Typical application example	25
7.1 Active Serial devices connected to the Internet	25
7.1.1 Application scenarios	25
7.1.2 Reference setting (Using Access Control Attendance Machine as an example)	25
7.1.3 Reference Setting figure	26
7.2 Passive serial devices connected to the Internet	26
7.2.1 Application scenarios	26
7.2.2 Reference setting (Take sensor as an example)	27
7.3 Equivalent serial devices connected to the Internet	28
7.3.1 Application scenarios	28
7.3.2 Reference setting	28
8 Setting for Peer-to-peer (P2P)	30
8.1 Get UUID	30
8.2 Send/Receive data	30
8.2.1 P2P to open the website of the serial server	30
8.2.2 Transfer data by P2P	31

※ 使用されたソースコードは<http://www.nissin-tech.com/>からダウンロードできます。

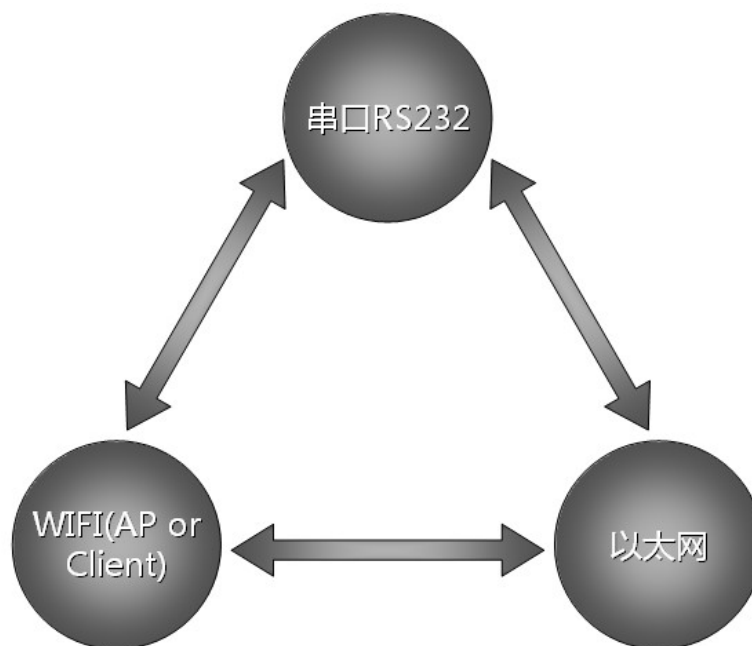
※ この文書の情報は、事前の通知なく変更されることがあります。

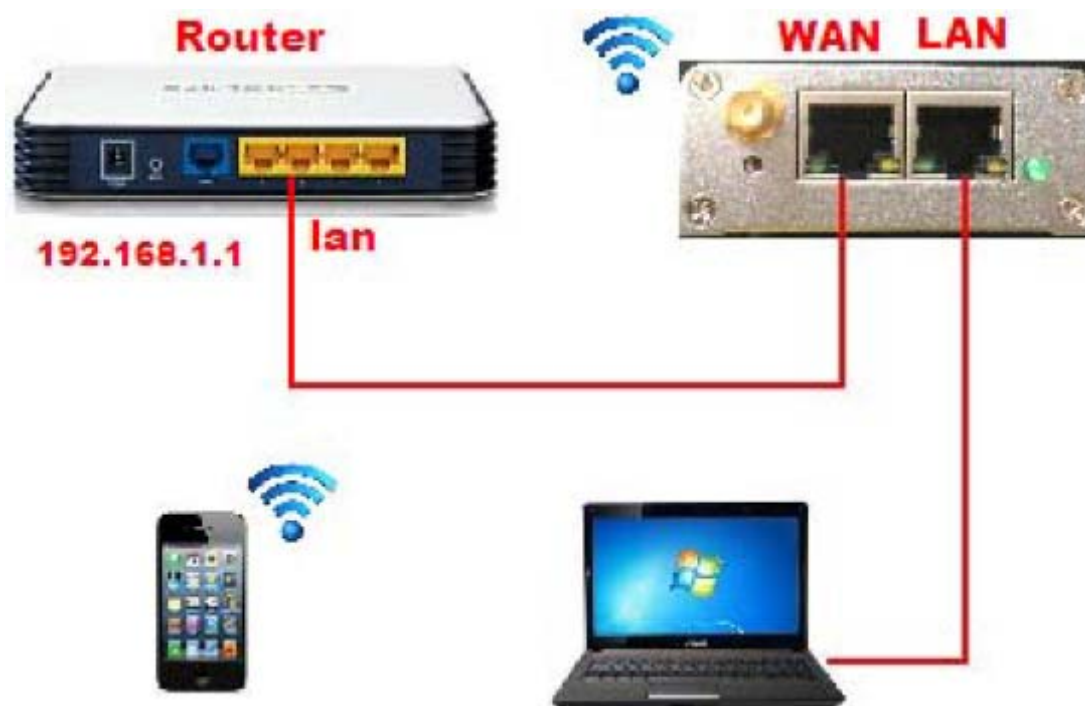
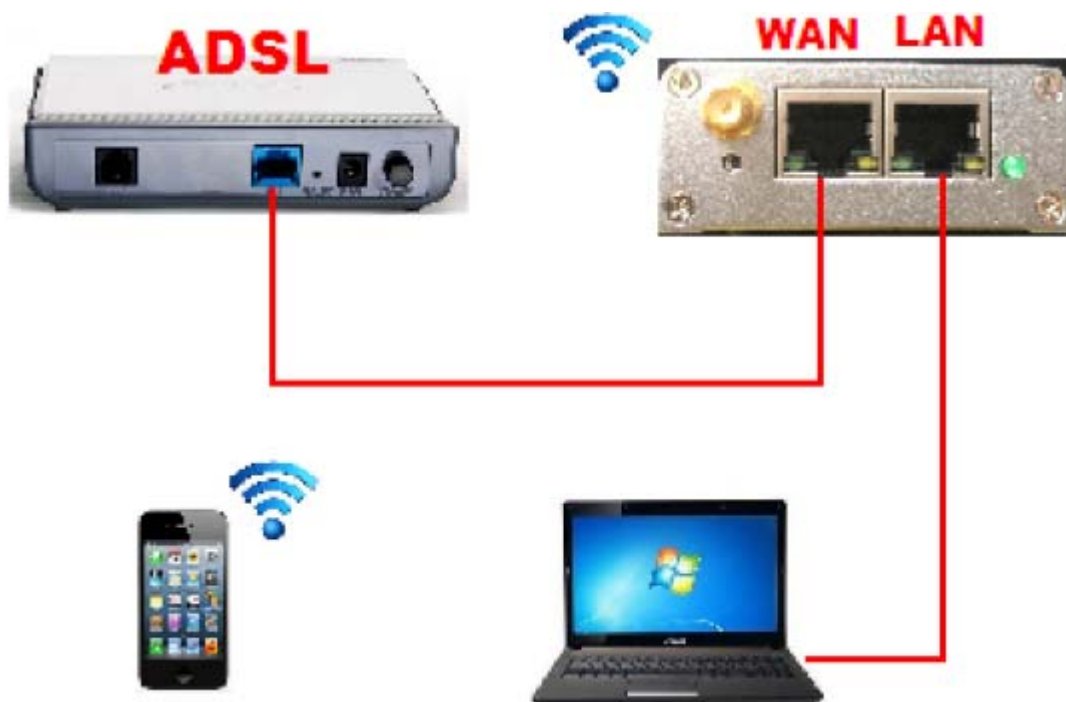
※ (株)日新テクニカの書面による許可のない複製は、いかなる形態においても厳重に禁じられています。

1 Brief Introduction

This product is based on the universal serial interface network standard, built-in TCP/IP protocol stack, enabling the user serial port, Ethernet, wireless network (WiFi) interface between the conversions.

Through the serial server, the traditional serial devices do not need to change any configuration; data can be transmitted through the Internet network. Provide a quick solution for the user's serial devices to transfer data via Ethernet.





2 Summarize

2.1 Technical Specifications

Network standard	wireless : IEEE 802.11n、 IEEE 802.11g、 IEEE 802.11b
	wired : IEEE 802.3、 IEEE 802.3u
Wireless transmission rate	11n: maximum up to 150Mbps 11g: maximum up to 54Mbps 11b: maximum up to 11Mbps
Tracks number	1-14
Frequency range	2.4-2.4835GHz
Emission power	12-15dBm
Interface	WAN LAN, RS232, DC IN, ANTENNA
Antenna	External Antenna 6dB
Functional Parameters	
WIFI work mode	Client/AP/ Router (default), default WiFi password: 12345678
WDS Function	Support WDS wireless bridge connection
Wireless security	Wireless MAC address filtering
	Wireless security function switch
	64/128/152 bit WEP encryption
	WPA-PSK/WPA2-PSK、 WPA/WPA2 security mechanism
Network management	Remote Web management
	Configuration file import and export
	WEB software upgrade
Serial to Ethernet	
Maximum transmission rate	500000bps
TCP connection	Max connection number > 20
UDP connection	Max connection number > 20
Serial baud rate	1200~500000bps
Other Parameters	
Status indicator	Status indicator
Environmental standard	Operating temperature : -20~70°C
	Operating humidity : 10%~90%RH(non condensing)
	Storage temperature : -40~80°C
	Storage humidity : 5%~90%RH(non condensing)

Additional properties	Frequency bandwidth optional : 20MHz,40MHz,Automatic

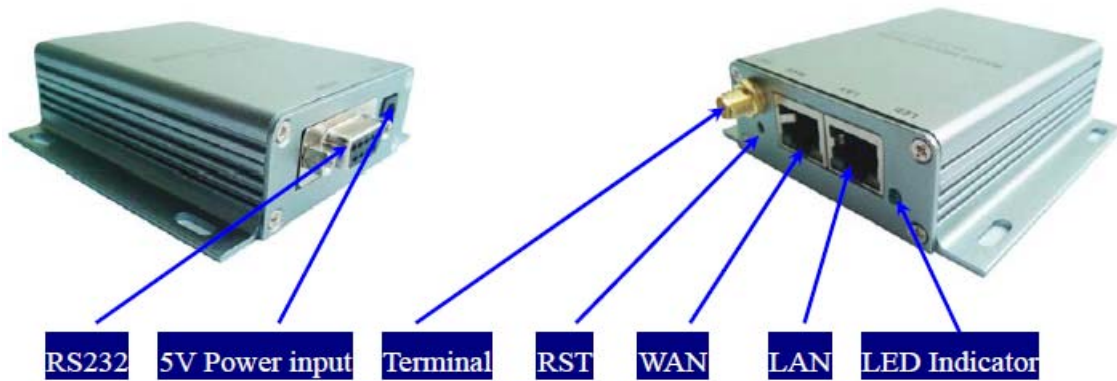
2.2 Product Outline

The outline of the serial WiFi server as follows. Mechanical Dimensions :
85×85×25 mm, not including the antenna.



2.3 External Interface

The serial WiFi sever is a serial-WiFi-Ethernet device, its external interface including RS232, DC IN, LAN, WAN, LED, RST. This section will detail the definition of each interface.



2.3.1 RS232

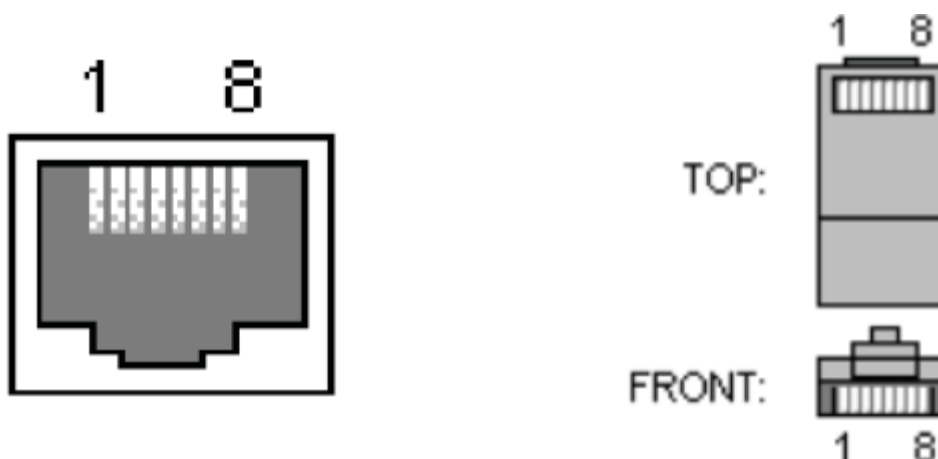
The following figure shows a schematic diagram of the external interface of RS232. Interface, the definition is as follows:



No	Function	Direction	Explanation
1	NC	NC	None
2	RxD	Input	Data receiving input
3	TxD	Output	Data sending output
4	NC	NC	None
5	GND	Input	GND
6	NC	NC	None
7	NC	NC	None
8	NC	NC	None
9	NC	NC	None

2.3.2 LAN Interface and WAN interface

The serial WiFi server provides two network interface, WAN port and LAN port, the interface is a standard form of RJ-45 interface. RJ-45 interface definition is shown as below :



The following table shows the pin definitions of RJ-45:

No	Function	Direction	Explanation
1	TX+	Output	Transmit Data+
2	TX-	Output	Transmit Data-
3	RX+	Input	Receive Data+
4	NC	NC	
5	NC	NC	
6	RX-	Input	Receive Data-
7	NC	NC	
8	NC	NC	

2.3.3 RST Button

RST button is used to reset HLK-WR02 Server to the factory settings. **METHODS:** When the device have startup complete, then using sharp object to press the RST button for at least 10 seconds, all parameters of the server can be set to the default value.

2.3.4 5V Power Input

Voltage range: 4.5 ~ 5.5V. The default configuration of the Device for the power adapter is 5V/1A DC power supply. Power interface: the inner core is positive.

2.3.5 Antenna Terminal

Standard SMA interface within the outer spiral needle, the interface can be equipped with 2.4G SMA antenna inside the screw hole standard.

2.3.6 LED Indicator light

Status indicating :

LED light blink : WiFi is ok

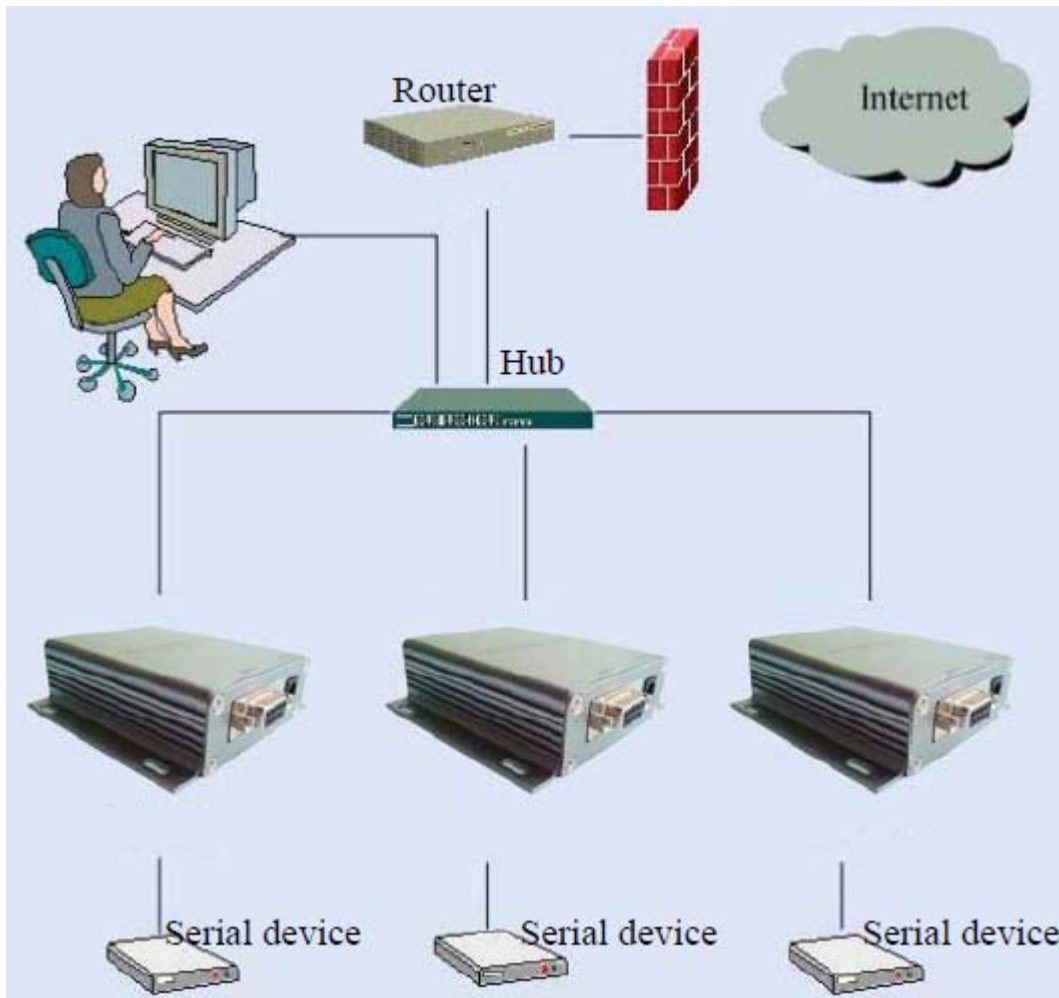
LED light off : WiFi is not ok

3 Networking mode Brief Introduction

This section focuses on describing application of the device. To introduce sorts of related networking scenarios.

3.1 Star like Network Structure

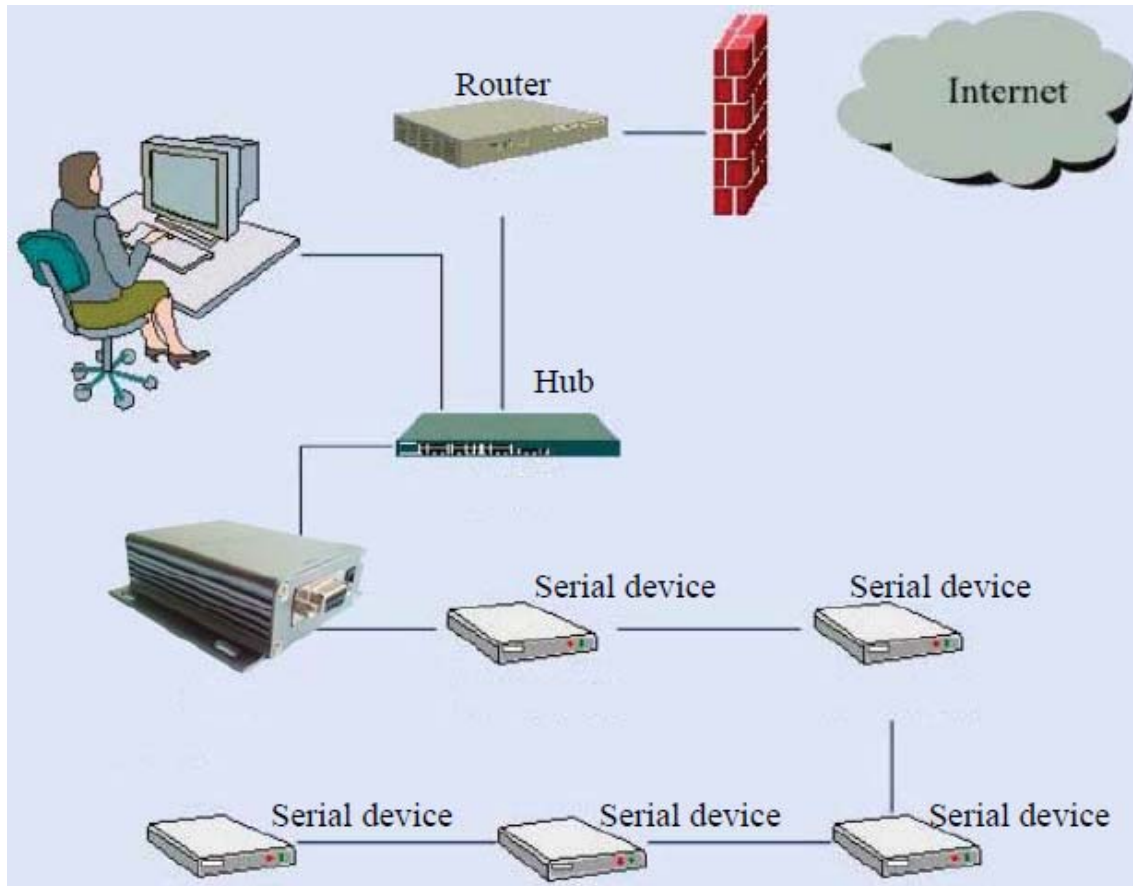
The most basic network structures of the serial server is the star network topology. This kind of network topology are also common in the local area network (LAN), a network topology. Its main characteristic is through a network of each workstation nodes in the network equipment concentration equipment (such as a hub or switch) together, are distributed in each node satellite. This kind of network structure is more convenient in the equipment increase or decrease. The following figure describes the Star like Networking structure :



In this network structure, each terminal work as an independent node to connect to the server. The server can commune with each terminal by way of TCP or UDP. To achieve all of the serial port terminal is connected to the Internet.

3.3 Bus Network structure

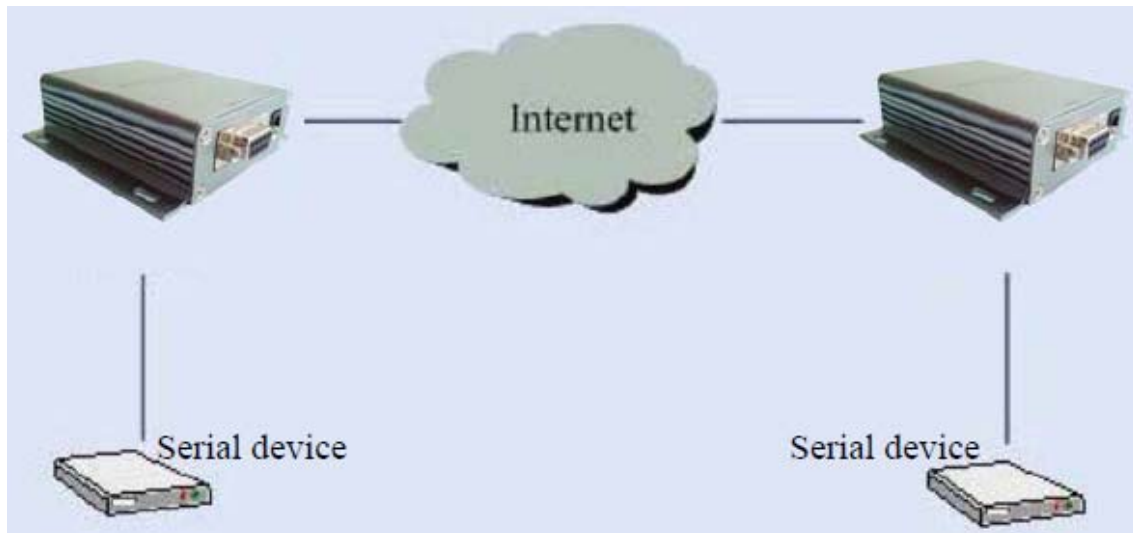
The character of Bus networking structure is that all the devices are directly connected to one bus, which is a set of network with low cost. However, all the devices in the network share the bandwidth of the bus, therefore, the network transmission rate will decline along with the increase in user. RS - 485 bus structure is typical sample of this structure. The bus structure diagram is as follows:



In such a network structure, all the equipment through the same cable connect to the server. Network maintenance and extension of relatively is easier, the response speed of the equipment and network transmission rate is less than star bus structure.

3.4 Peer-to-peer Network structure

Using the Device, original serial device can be connected to peer-to-peer network structure. The characteristic of this structure is that all the devices in the network status are equal. For user's equipment, there does not exist master-slave relationship or a managed device. All user terminals can be equivalent to send and receive data. The structure diagram is as follows:



Using the serial server, user's serial devices can be equivalent to connected to the Ethernet. Thus, to achieve peer-to-peer communications through Ethernet.

4 Quick start Guide

This section describes how to manage to use the device as soon as possible, users can become familiar with the major operations quickly with the serial server, according to the introduction of this section.

4.1 Preparatory work

- **Hardware**
 - The serial server and matching power supply
 - Ethernet cable
 - Direct serial line
- **Software**
 - Serial Debug software, such as serial port Debug assistant, serial master and so on.
 - TCP/UDP Debug software

4.2 Power-up Test

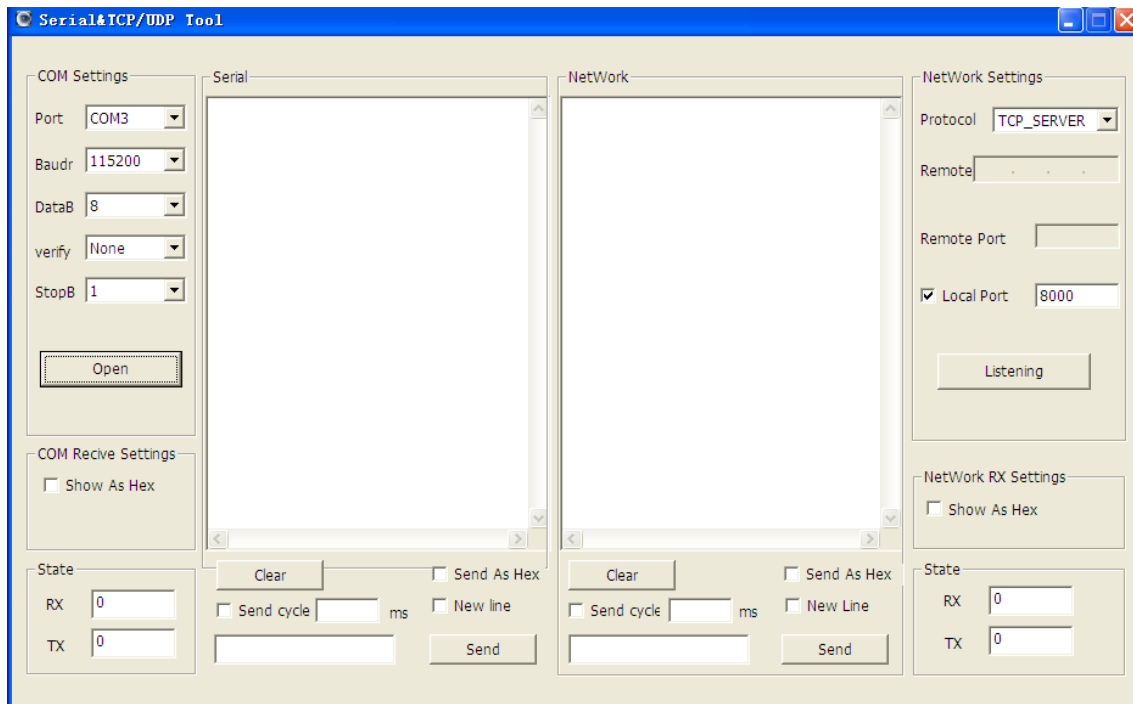
1. Power up the serial server. The Link light will flick at low frequency after power.
2. Connected the serial server with WIFI or network cable (or you can connect the PC and the serial server in the same LAN through hub or router).
3. The IP address of the PC should be set to 192.168.16.X. The default IP address of the Serial

Server is 192.168.16.254

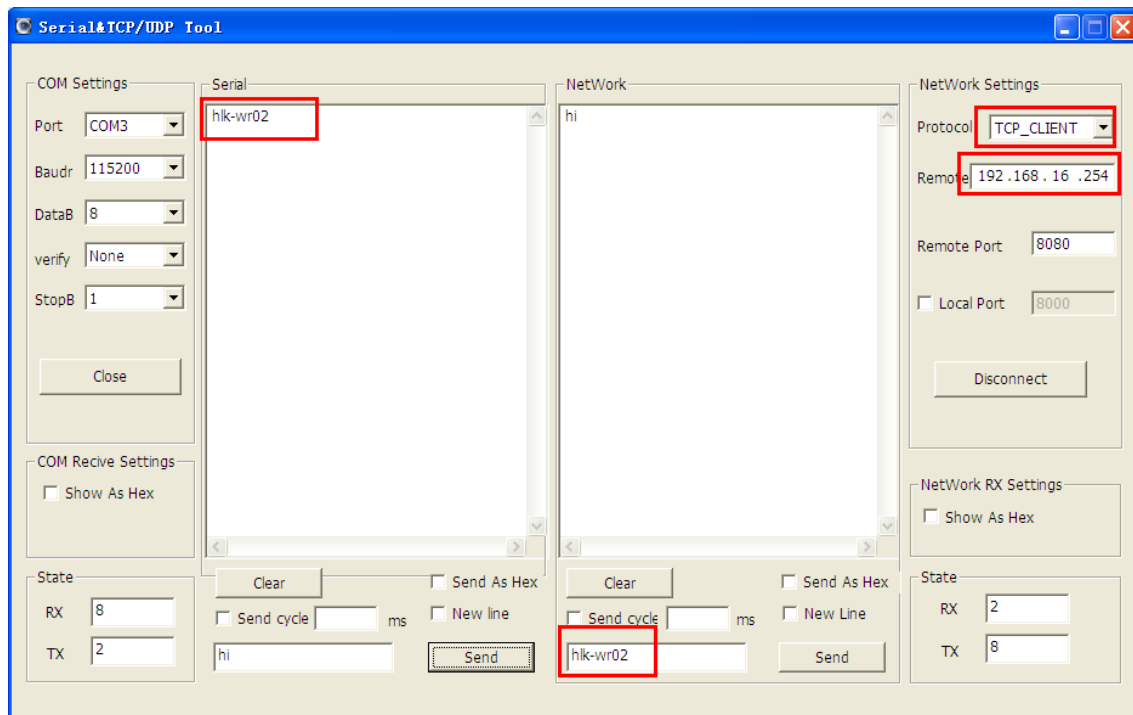
4. Make sure the PC side can ping the serial server.

4.3 Function Test

1. Power on the device, Connect the RS232 and the internet, make sure you PC can ping 192.168.16.254:
2. Start the serial Debug software, we use **Serial&TCP_UDP Tool.exe** in this sample;



3. Start a TCP client like the below:



5 Product parameter configuration and instruction

The serial server has built-in Web Server, users can configure the parameters of the serial server via web pages. Also, you can log in to the website to see the current serial server parameter settings.

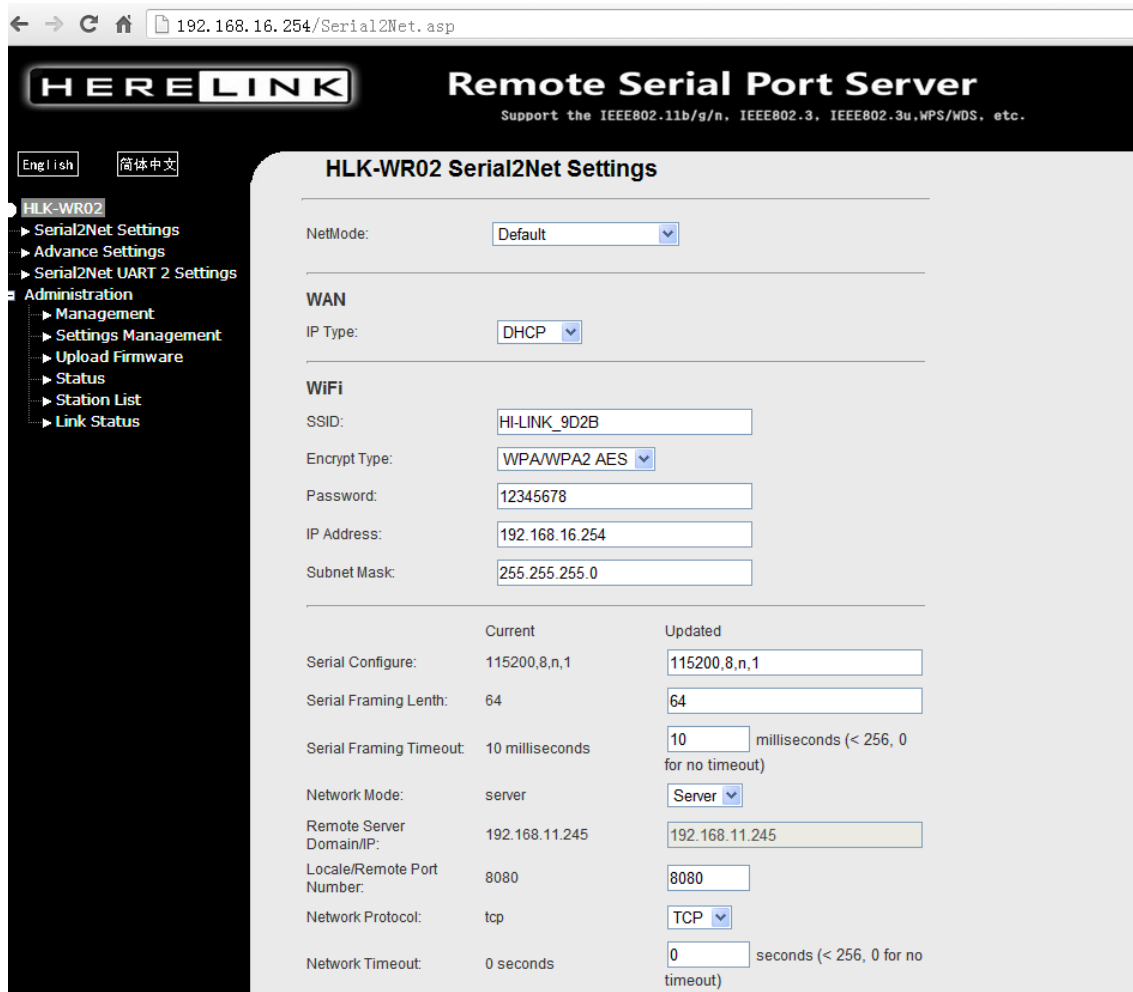
5.1 Serial Server Logo in

When you have enter the web sit, you needs to change the password to avoid non-administrator rewritten it illegally. The default user Name and password of the serial server are **admin/admin**. Please rewrite the password after first use.

Note : The serial server only provide user login password setting. Please keep the rewritten password firmly in mind.

5.2 Serial server Parameter inquiry

After passing the IE browser to log in to the serial server, you can see the screen shown below. This page shows the main current operating parameters of serial server.



Through the correct module address (default address:http://192.168.16.254),you can access to the WEB configuration page.

The page can be divided into 3 areas :

1. Network configuration area
2. Serial function configuration areas
3. Configuration submit area

5.3 WEB network configuration

Net mode selection :

Default – default work mode

ETH-SERIAL – Serial to Ethernet

WIFI (CLIENT)-SERIAL – serial to WIFI CLIENT

WIFI (AP)-SERIAL) – Serial to WIFI AP

Choose different work mode, the web will show you different page. Mode configuration page is as follows:

5.3.1 Serial to Ethernet-dynamic IP

NetMode:	<input type="text" value="ETH-SERIAL"/>
IP Type:	<input type="text" value="DHCP"/>

5.3.2 Serial to Ethernet-static IP

NetMode:	<input type="text" value="ETH-SERIAL"/>
IP Type:	<input type="text" value="STATIC"/>
IP Address:	<input type="text" value="192.168.11.254"/>
Subnet Mask:	<input type="text" value="255.255.255.0"/>
Default Gateway:	<input type="text" value="192.168.11.1"/>
Primary DNS Server:	<input type="text" value="192.168.11.1"/>
Secondary DNS Server:	<input type="text" value="8.8.8.8"/>

5.3.3 Serial to WIFI CLIENT-dynamic IP

NetMode:	<input type="text" value="WIFI(CLIENT)-SERIAL"/>
SSID:	<input type="text" value="Hi-Link_"/>
Encrypt Type:	<input type="text" value="WPA2 AES"/>
Password:	<input type="text" value="12345678"/>
IP Type:	<input type="text" value="DHCP"/>

5.3.4 Serial to WIFI CLIENT-static IP

NetMode:	WIFI(CLIENT)-SERIAL
SSID:	Hi-Link_
Encrypt Type:	WPA2 AES
Password:	12345678
IP Type:	STATIC
IP Address:	192.168.11.254
Subnet Mask:	255.255.255.0
Default Gateway:	192.168.11.1
Primary DNS Server:	192.168.11.1
Secondary DNS Server:	8.8.8.8

5.3.5 Serial to WIFI AP

NetMode:	WIFI(AP)-SERIAL
SSID:	Hi-Link_
Encrypt Type:	WPA2 AES
Password:	12345678
IP Address:	192.168.11.254
Subnet Mask:	255.255.255.0

5.4 WEB serial configuration

Serial Web configuration page (Serial2Net.asp) is as follows :

Serial Settings

	Current	Updated
Serial Configure:	115200,8,n,1	<input type="text" value="115200,8,n,1"/>
Serial Framing Lenth:	64	<input type="text" value="64"/>
Serial Framing Timeout:	10 milliseconds	<input type="text" value="10"/> milliseconds (< 256, 0 for no timeout)
Network Mode:	client	<input type="text" value="Client"/>
Remote Server Domain/IP:	192.168.11.245	<input type="text" value="192.168.11.245"/>
Locale/Remote Port Number:	8080	<input type="text" value="8080"/>
Network Protocol:	udp	<input type="text" value="UDP"/>
Network Timeout:	0 seconds	<input type="text" value="0"/> seconds (< 256, 0 for no timeout)
		<input type="button" value="Submit"/>

Current shows the current configuration. **Updated** shows the current revision parameters, **Submit** submit the revision.

Serial Configure : Serial configuration format : Baud rate, data bits, parity bit, stop bit. For example : “115200,8,n,1” .

Serial Framing Length : The Length of Serial Framing

Serial Framing Timeout : The time of Serial Framing

Network Mode : choose Client、 Server or none

Remote Server Domain/IP : Remote Server Domain/IP address, For example : 192.168.11.245 or www.nissin-tech.com .

Locale/Remote Port Number : The specified parameter is not the same under the different network modes. Client specifies the port number on the remote, Server specified local port number.

Network Protocol : Use TCP or UDP Protocol

Network Timeout : Under the server network mode, no data transmission within the timeout period, the connection will be disconnected. 0 specifies never disconnected.

5.5 Submitting Alteration

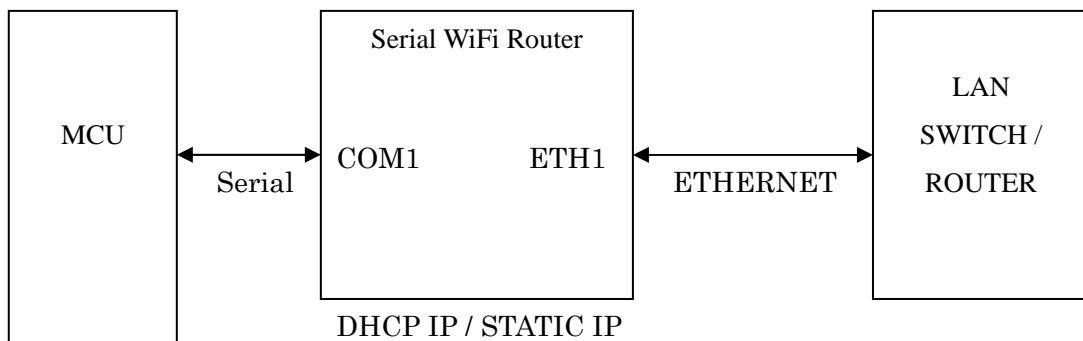
Click the button ‘Apply’ to submit the configuration of the current page. If some parameters of

the network have changed, the submission process may take about 25 seconds. If you only modify the serial functional configuration, the submission process will be completed soon. Click the button ‘Cancel’ to reload the page, the modified configuration will be lost.

6 Function Description

The module can be divided into four major modes : default mode, serial to Ethernet, serial to WIFI CLIENT and serial to WIFI AP.

6.1 Serial to Ethernet

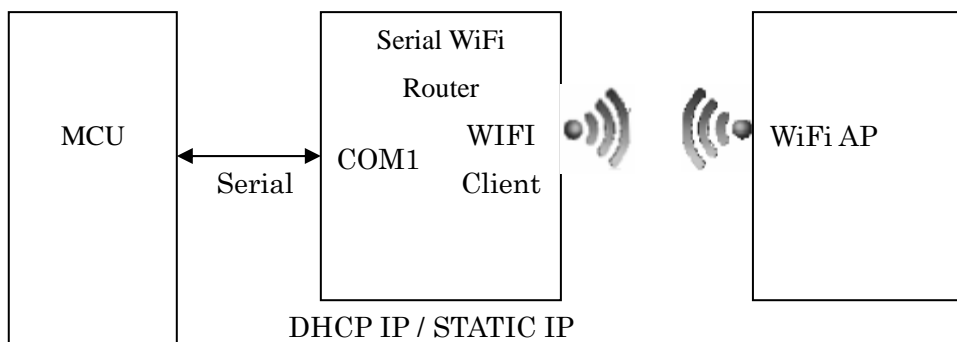


(ETH1 works as WAN, ETH2 works as LAN.)

In this mode, ETH1 enable, WIFI, ETH2 function close. Through the appropriate settings, the data between COM1 and ETH1 network can achieve mutual conversion.

Ethernet can be configured as dynamic IP address (DHCP), can also be configured as static IP address (STATIC).

6.2 Serial to WIFI CLIENT



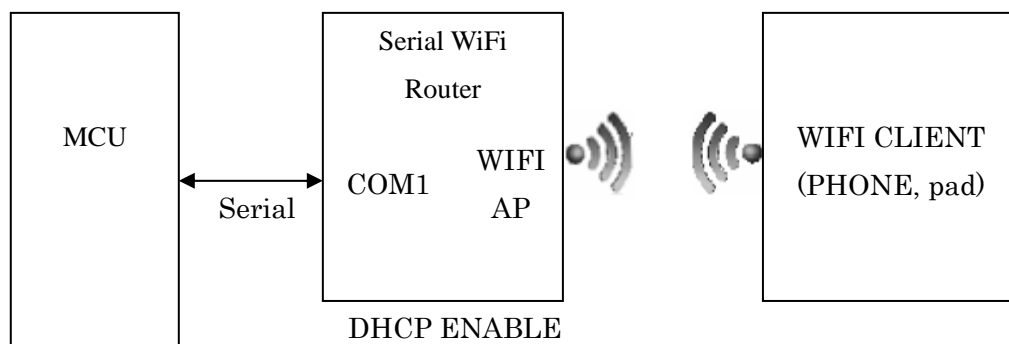
(ETH1 works as WAN, ETH2 works as LAN.)

In this mode, WIFI enable, module works in the client mode, ETH1, ETH2 function close. Through the appropriate settings, the data between COM1 and WIFI network can achieve mutual conversion.

WIFI CLIENT can be configured as dynamic IP address (DHCP), can also be configured as static IP address (STATIC).

WIFI safety: support all encryption methods at present.

6.3 Serial to WIFI AP



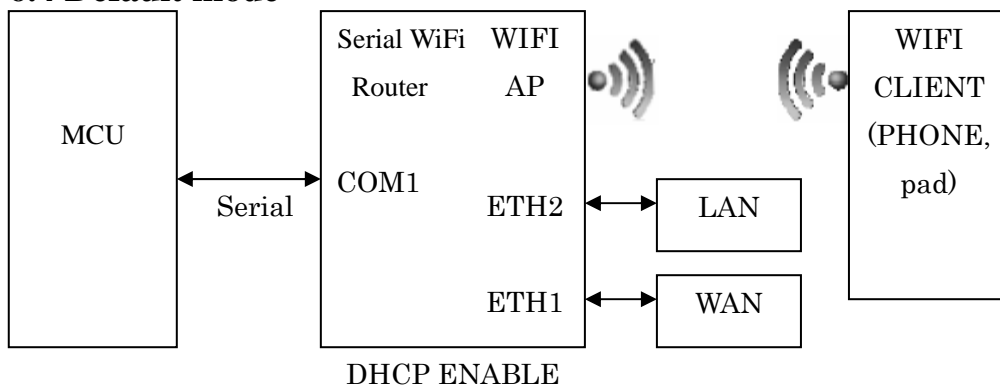
(ETH1 works as WAN, ETH2 works as LAN.)

In this mode, WIFI enable, module works in the AP mode, ETH1, ETH2 function close. Through the appropriate settings, the data between COM1 and WIFI network can achieve mutual conversion.

WIFI safety: support all encryption methods at present.

In this mode, WIFI device can connect with the module and become the device under WIFI LAN.

6.4 Default mode



In this mode, WIFI enable, module works in the AP mode, ETH1, ETH2 function enable. ETH1 works as WAN, ETH2 works as LAN. Through the appropriate settings, the data between COM1 and network can achieve mutual conversion.

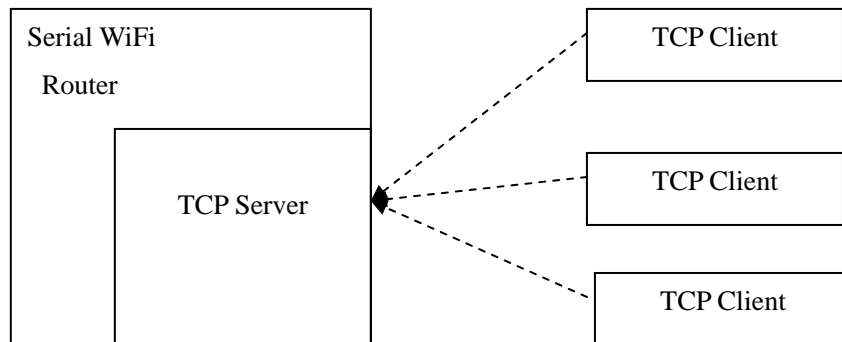
WIFI safety: support all encryption methods at present.

In this mode, WIFI device can connect with the module and become the device under WIFI LAN.

WAN default IP is dynamic IP address. LAN, WIFI for the same local area network, enabled by default DHCP server.

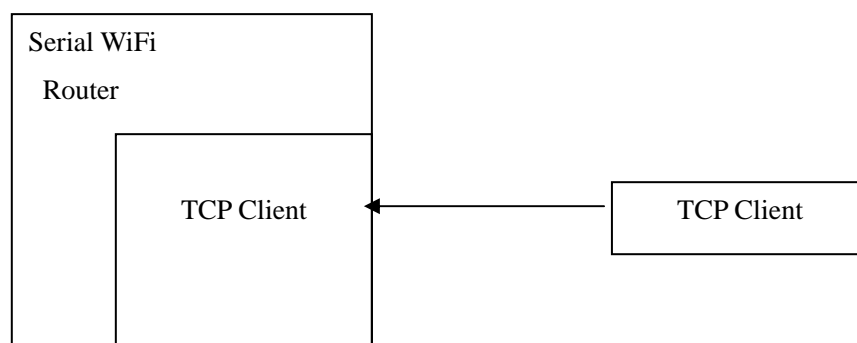
There are four mode for serial-net conversion : TCP Server、 TCP Client、 UDP Server、 UDP Client.

6.4.1 TCP Server



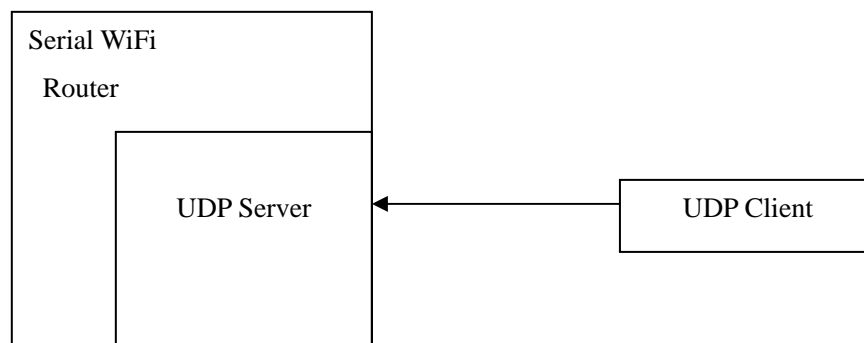
In this mode, the module is listening on the specified port, waiting for TCP Client connection, if connected, all TCP data is sent directly to the serial port end, the data of the serial end sent to TCP Client end.

6.4.2 TCP Client



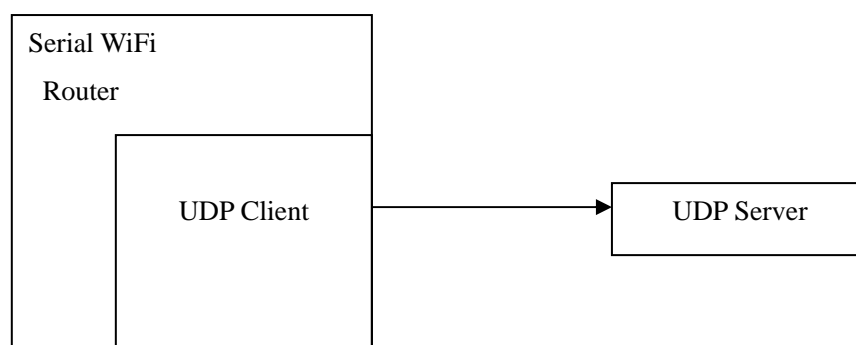
In this mode, the module is connected to the specified domain / IP port. All the data sent from the TCP Server-side end will be sent directly to the serial port, the data from the serial end sent to the TCP Server-side. Abnormal network disconnect will cause the module active reconnect. TCP Active reconnection function enable, TCP Server initiative disconnected, the module will immediately take the initiative to reconnect, and otherwise the module will not reconnect.

6.4.3 UDP Server



In this mode, the module opens the local designated port, once received the data sent to the port, the module will send the data to the serial port, and record the remote IP, port. The module will record only the last information on the remote connection. Serial received data will be sent directly to the recorded remote IP, port.

6.4.4 UDP Client

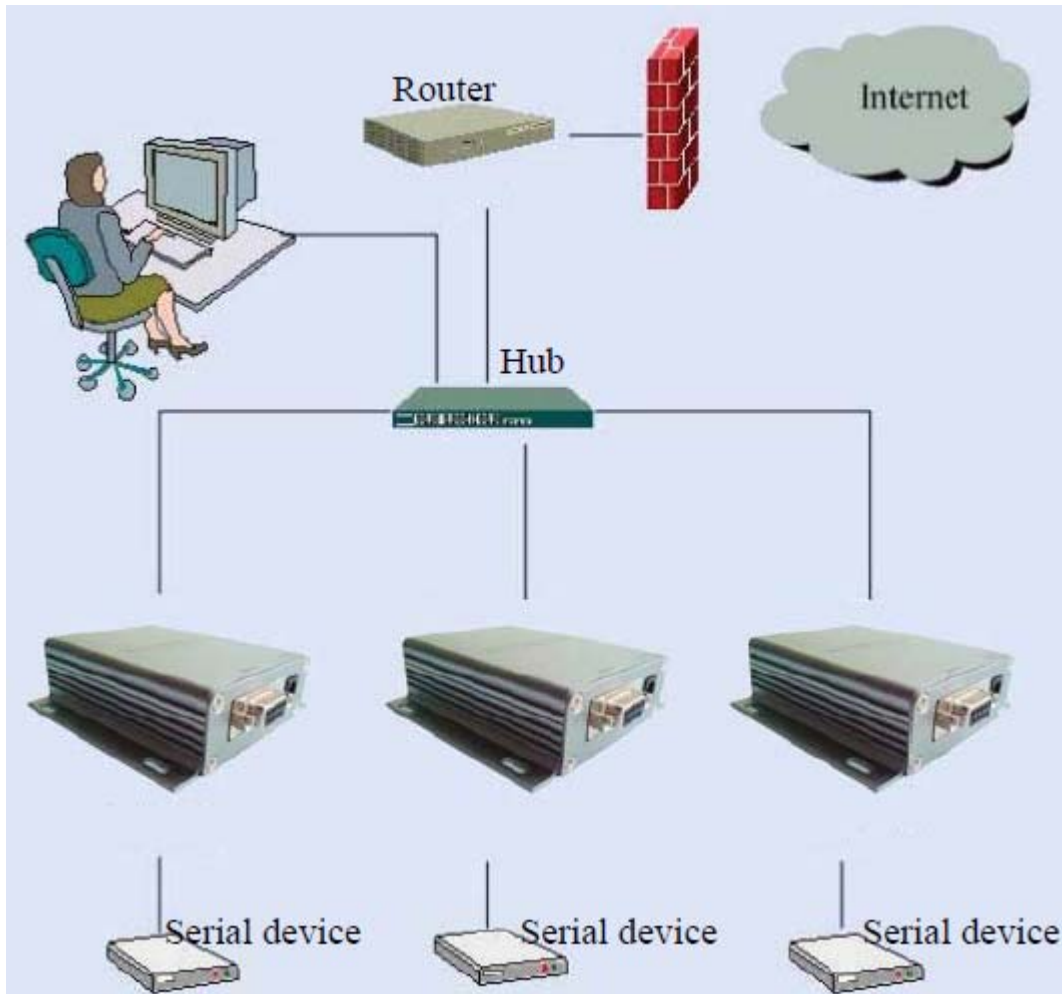


In this mode, the module directly sends the serial data to the specified ip, port. The serial data returned from the server-side will be distributed to serial port.

7 Typical application example

7.1 Active Serial devices connected to the Internet

7.1.1 Application scenarios



Active serial equipment networking refers to a way which the equipment initiate the connection and process the data interaction (upload or download) compared with a backend server. Typical active devices, such as POS machine, etc., started to connect after the completion of the backend server as soon as possible in each credit card transaction, and upload data. Active serial equipment networking topology structure as shown in the above. Among them, the backend Server work as a TCP Server, the device access to the network via a serial port Server, also as a TCP Client end.

7.1.2 Reference setting (Using Access Control Attendance Machine as an example)

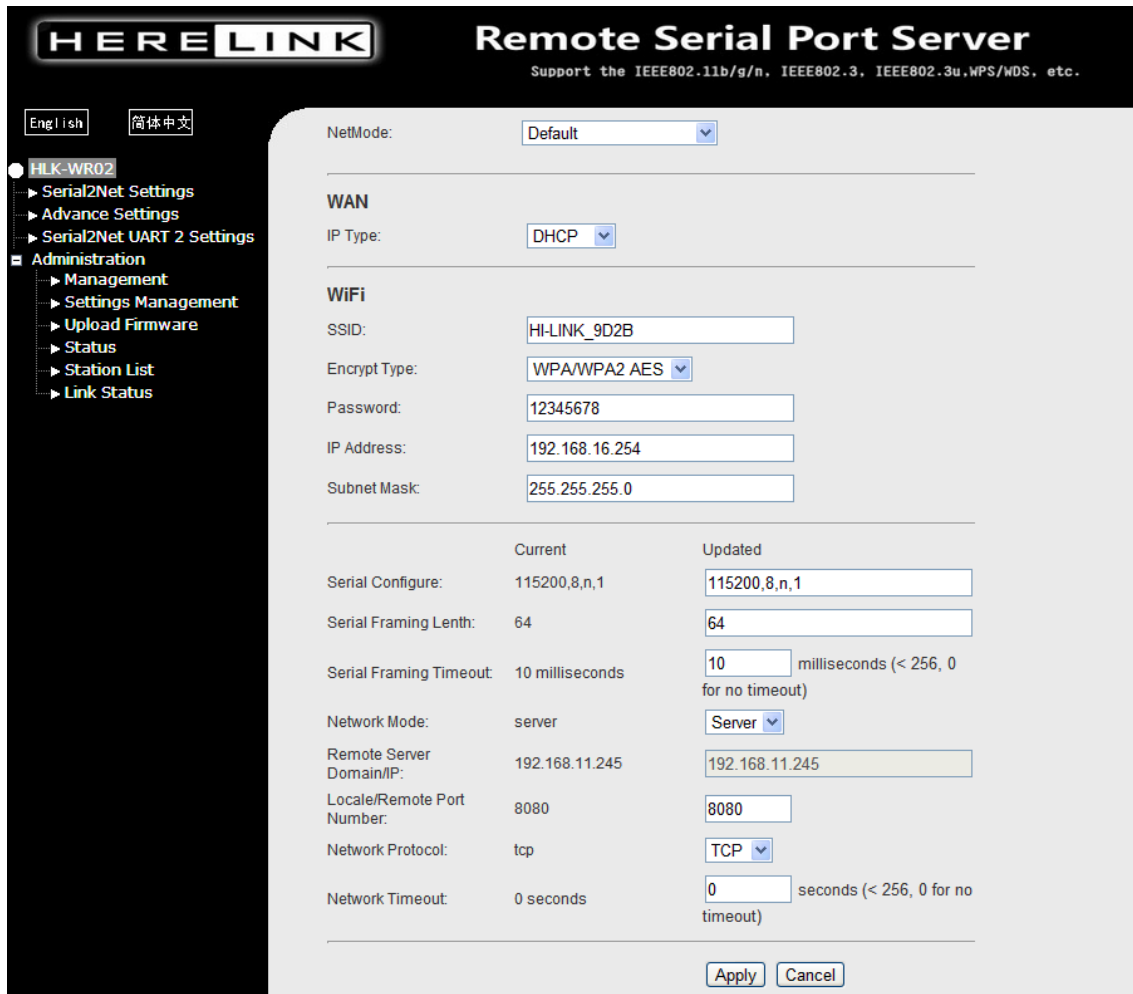
■ Network Settings

- ◆ DHCP enable
- ◆ Static IP address is available also

■ Operation mode

- ◆ Protocol Type : TCP > C/S Mode: Client
- ◆ Server IP Address : backend server IP address, such as 192.168.16.254
- ◆ Port Number : backend server port number, such as 8080

7.1.3 Reference Setting figure



HERE LINK Remote Serial Port Server
Support the IEEE802.11b/g/n, IEEE802.3, IEEE802.3u, WPS/WDS, etc.

English 简体中文

HLK-WR02

- ▶ Serial2Net Settings
- ▶ Advance Settings
- ▶ Serial2Net UART 2 Settings
- Administration
 - ▶ Management
 - ▶ Settings Management
 - ▶ Upload Firmware
 - ▶ Status
 - ▶ Station List
 - ▶ Link Status

NetMode: Default

WAN

IP Type: DHCP

WiFi

SSID: HI-LINK_9D2B

Encrypt Type: WPA/WPA2 AES

Password: 12345678

IP Address: 192.168.16.254

Subnet Mask: 255.255.255.0

	Current	Updated
Serial Configure:	115200,8,n,1	115200,8,n,1
Serial Framing Lenth:	64	64
Serial Framing Timeout:	10 milliseconds	10 milliseconds (< 256, 0 for no timeout)
Network Mode:	server	Server
Remote Server Domain/IP:	192.168.11.245	192.168.11.245
Locale/Remote Port Number:	8080	8080
Network Protocol:	tcp	TCP
Network Timeout:	0 seconds	0 seconds (< 256, 0 for no timeout)

Apply Cancel

7.2 Passive serial devices connected to the Internet

7.2.1 Application scenarios

Passive serial device networking refers to a way in which all equipment in the system has been waiting for connection in a passive state, only the background server initiate to connect with equipment, and request or download data. Some typical applications, such as sensor networks, entrance guard controller and so on, each sensor terminal or entrance guard controller is collecting data all the time in real time. The data collected did not upload at once, but temporarily stored in the

device. While the backend server periodically connect the equipment every once in a while actively, and request to upload or download data. At this time, The backend Server work as a TCP Client , while the equipment is a TCP Server end.

At this point, if the customer uses virtual UART software, we suggest that the customer can set the network to active network model introduced in section 5.1 , keep the equipment online for a long time . In case the UART software in the original user on the server side can real-time inspection to the existence of the UART equipment.

7.2.2 Reference setting (Take sensor as an example)

■ Networking Setting

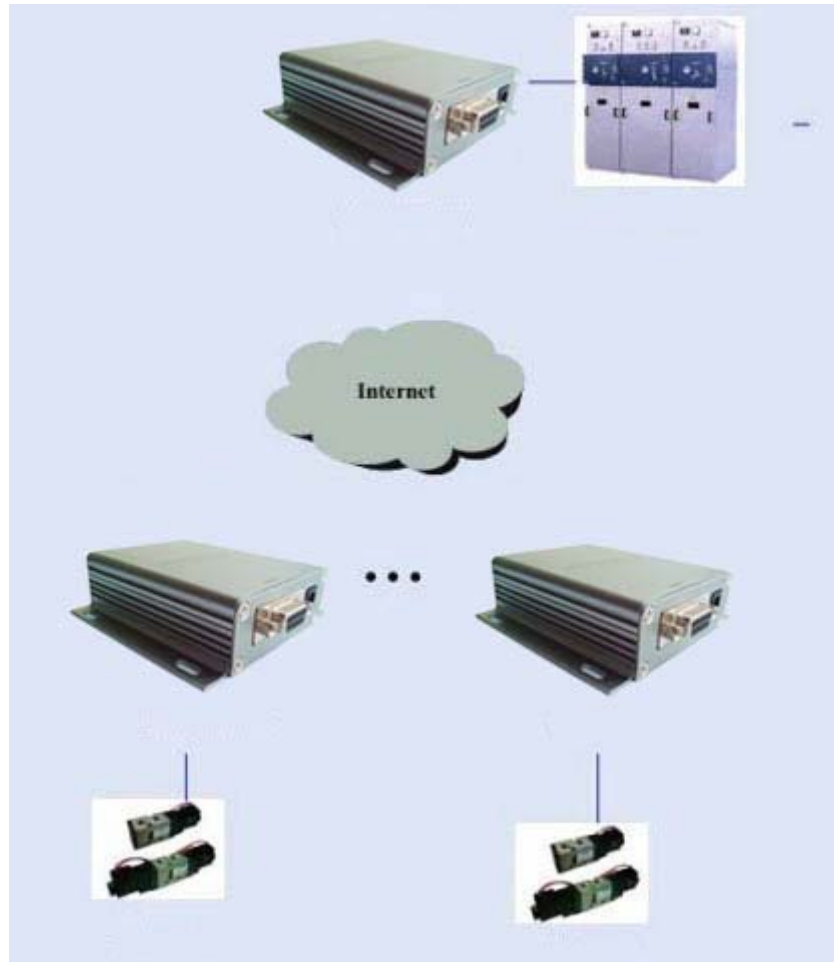
- ◆ IP address : 192.168.2.X
- ◆ Mask : 255.255.255.0
- ◆ Gateway : 192.168.2.1
- ◆ DNS : 192.168.2.1

■ Operation mode setting

- ◆ Start Automatic operation mode
- ◆ Protocol Type : TCP
- ◆ C/S mode : server
- ◆ Port No.:60000
- ◆ Time Out : 120

7.3 Equivalent serial devices connected to the Internet

7.3.1 Application scenarios



Peer-to-peer networking refers to all the equipment in the system make up a private network to communicate with each other, instead of a PC as a server. All of the devices are connected via a serial port or 485 bus. This kind of networking mode all the equipment at any time are likely to send data. Typical application scenario is the direct connection between the controller and each control node in the industrial field. This in the network can use several UART server to connect, the parameter configuration of the equipment.

7.3.2 Reference setting

Device 1

■ Network setting

- ◆ IP address : 192.168.0.1
- ◆ Mask : 255.255.255.0
- ◆ Gateway : 192.168.0.1

- ◆ DNS : 192.168.0.1

- Operation setting

- ◆ Protocol Type : TCP
- ◆ C/S mode : server
- ◆ Port No. : 8080
- ◆ Timeout : 0

Device 2

- **Network Settings**

- ◆ IP address : 192.168.0.2
- ◆ Mask : 255.255.255.0
- ◆ Gateway : 192.168.0.1
- ◆ DNS address : 192.168.0.1

- **Operation mode**

- ◆ Start automatic operation mode
- ◆ Protocol type : TCP
- ◆ C/S mode : client
- ◆ Server address : 192.168.0.1
- ◆ Port No. : 8080

Service 3

- **Network settings**

- ◆ IP address : 192.168.0.3
- ◆ Mask : 255.255.255.0
- ◆ Gateway : 192.168.0.1
- ◆ DNS : 192.168.0.1

- **Operation mode setting**

- ◆ Start Automatic operation mode
- ◆ Protocol Type : TCP
- ◆ C/S mode : Client
- ◆ Server Address : 192.168.0.1
- ◆ Port No : 8080

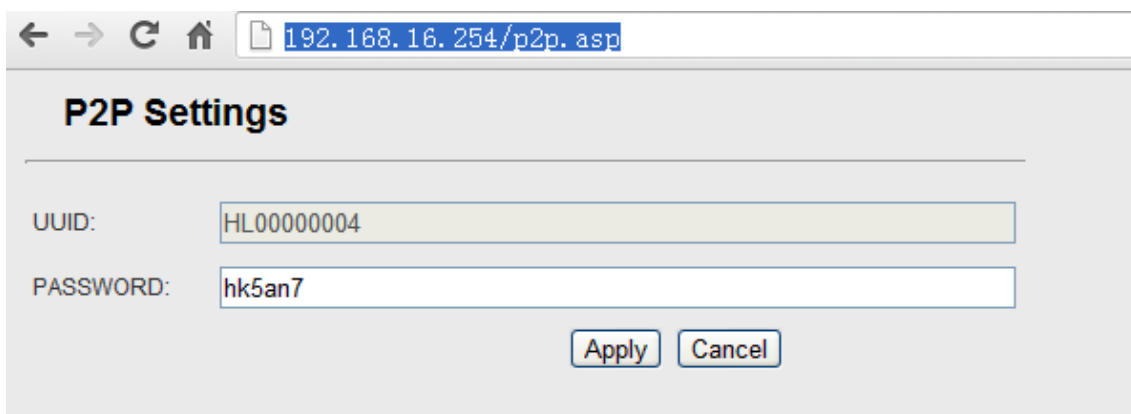
8 Setting for Peer-to-peer (P2P)

How to control a RS232 device thousands of miles away? The serial server can help you!

8.1 Get UUID

First, make sure your computer ping the server's IP is ok, and also the server can connect to the internet.

Open the: <http://192.168.16.254/p2p.asp> user: admin password: admin, you can see the below:



The UUID is: HL00000004 and the password for this UUID is: hk5an7.

You can not change the UUID, but can change the password.

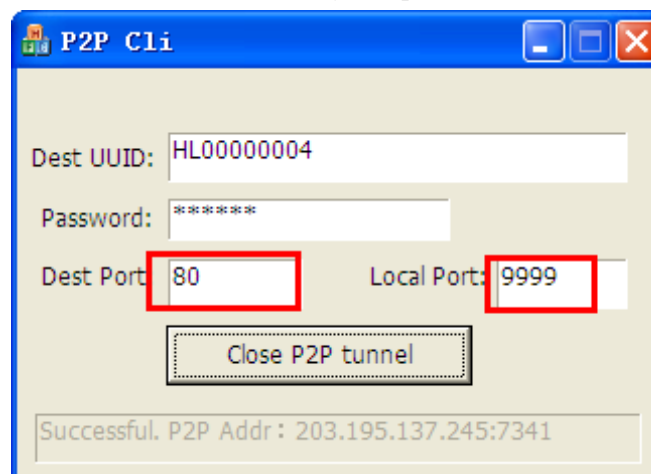
Every serial server has a unique UUID.

8.2 Send/Receive data

8.2.1 P2P to open the website of the serial server

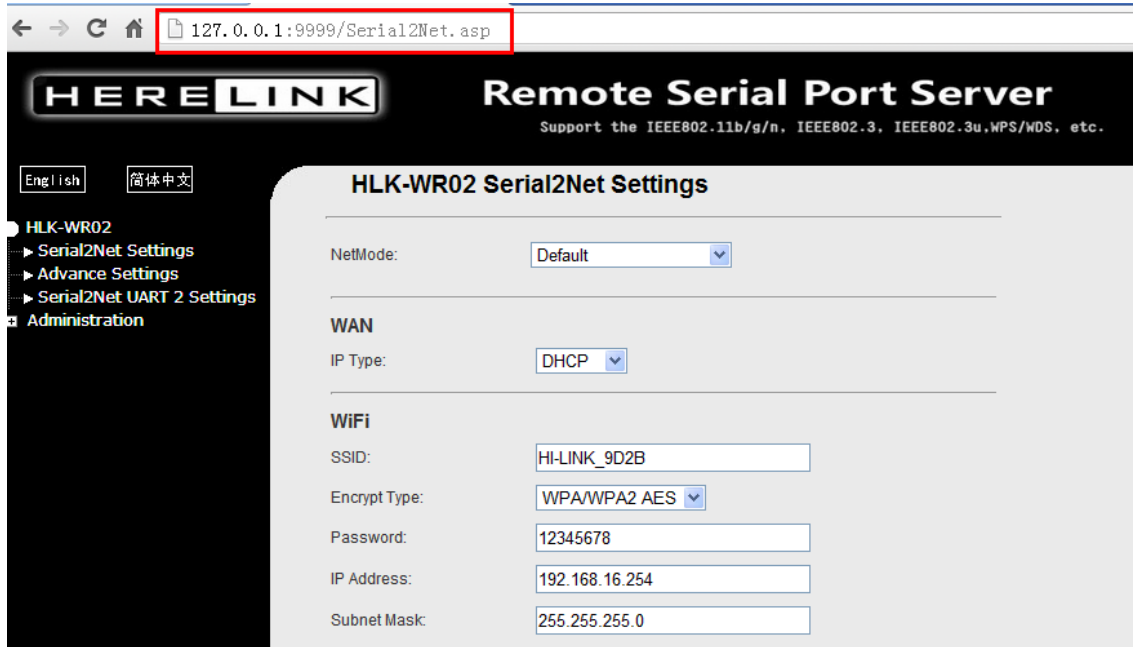
We suppose the serial server is in USA. And my computer is in Japan.

First, Open our test tool ([P2PCli.exe](#)) on my computer:



Because the http protocol is port 80, so the Destin Port we write 80.

Then, open your browser, type in: <http://127.0.0.1:9999> user: admin password: admin, you will find this below:



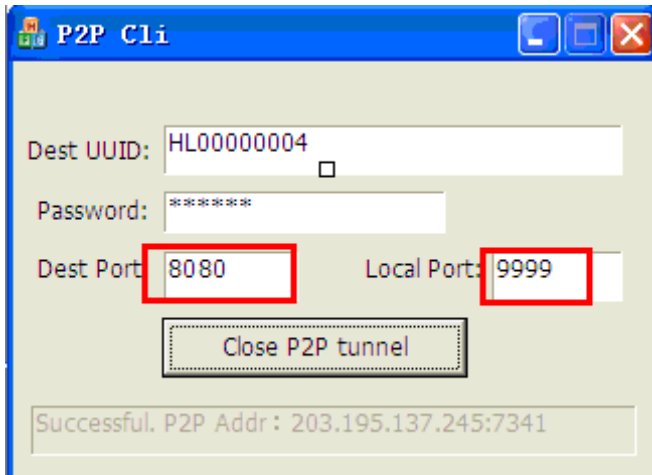
8.2.2 Transfer data by P2P

We suppose the serial server is in USA. And my computer is in Japan.

The serial port parameter is like this:

	Current	Updated
Serial Configure:	115200,8,n,1	<input type="text" value="115200,8,n,1"/>
Serial Framing Lenth:	64	<input type="text" value="64"/>
Serial Framing Timeout:	10 milliseconds	<input type="text" value="10"/> milliseconds (< 256, 0 for no timeout)
Network Mode:	server	<input type="text" value="Server"/>
Remote Server Domain/IP:	192.168.11.245	<input type="text" value="192.168.11.245"/>
Locale/Remote Port Number:	8080	<input type="text" value="8080"/>
Network Protocol:	tcp	<input type="text" value="TCP"/>
Network Timeout:	0 seconds	<input type="text" value="0"/> seconds (< 256, 0 for no timeout)

First, open our test tool on my computer:



Because the serial port is: 8080, so we write the Destin Port 8080. We connect the **TX and RX together** of the serial server's DB9. That means, the serial port will send the same data what it received.

Second: Open the TCP/UDP test tool. Establish a TCP client like this:

